



High efficiency

Multipoint water heaters

**Rinnai**

# Revolutionise and go continuous flow with Rinnai high efficiency Low NOx multipoint water heaters.

**Rinnai** produces over 12 million gas appliances every year which are distributed to all parts of the world and are all ISO-9001 and ISO-14001 certified.

Continuous flow water heaters are an advanced variant of traditional multipoint water heaters, they are far more efficient than storage systems and are the preferred method of heating water. Restaurants and domestic properties are a prime example of this as they require high volumes of water at intermittent times of day delivered at accurate temperatures to ensure user comfort and safety. With the Rinnai continuous flow hot water system you will never run out of hot water.

## Key Features

- Ultra low-NOx surpassing ECO-DESIGN requirements
- Internal Wall mounted
- Room sealed
- Temperature range 35-60 degrees centigrade
- Ignition direct electronic
- 17l delivery capacity
- Easy installation
- Light weight - 14kg
- Push fit flue system
- Simple wiring
- H (541) W(373) D(173)
- Inbuilt frost protection
- Eternally wall mounted variants



# Specification

	<b>11i</b>	<b>17i</b>	<b>17e</b>
Gas consumption and capacities min operation (Hi = net calorific value - Hs = gross calorific value)			
<b>G20 Nat Gas: Input Qm: Hi/Hs   Output Pm (kW)</b>	4.10/4.53   3.56	4.10/4.53   3.56	4.10/4.53   3.56
<b>G20 Nat Gas flow ref. conditions Vr (m3/h)</b>	0.43	0.43	0.43
<b>G31 Input Qm: Hi/Hs   Output Pm (kW)</b>	4.10/4.53   3.56	4.10/4.53   3.56	4.10/4.53   3.56
<b>G31 flow normal operating conditions Mn (kg/h)</b>	0.33	0.33	0.33
Gas consumption and capacities nominal operation (Hi = net calorific value - Hs = gross calorific value)			
<b>G20 Nat Gas: Input Qm: Hi/Hs   Output Pm (kW)</b>	21.3/23.7   18.9	32.4/36.0   28.4	32.4/36.0   28.4
<b>G20 Nat Gas flow ref. conditions Vr (m3/h)</b>	2.25	3.43	3.43
<b>G31 Input Qm: Hi/Hs   Output Pm (kW)</b>	21.8/23.7   18.9	33.1/36.0   28.4	33.1/36.0   28.4
<b>G31 flow normal operating conditions Mn (kg/h)</b>	1.69	2.58	2.58
<b>Gas category</b>	II2H3P, II2H3B/P, II2HM3B/P		
<b>Noise level (dB)</b>	56		
<b>Water pressure (@nom/max flow rate - max) - (Pw)</b>	1.00/1.4 - 8.3 Bar		
<b>Min operating flowrate</b>	2l/min		
<b>Temperature range</b>	37-46, 48, 50, 55, 60, 65		
<b>Max flowrate (<math>\Delta T=25^{\circ}\text{C}</math>)</b>	10.8	16.3l/min	
<b>Max flowrate (<math>\Delta T=30^{\circ}\text{C}</math>)</b>	9	13.6l/min	
<b>Max flowrate (<math>\Delta T=35^{\circ}\text{C}</math>)</b>	7.7	11.6l/min	
<b>Max flowrate (<math>\Delta T=40^{\circ}\text{C}</math>)</b>	6.8	10.2l/min	
<b>Max flowrate (<math>\Delta T=45^{\circ}\text{C}</math>)</b>	5.4	9l/min	

# Flue Kits for Rinnai multipoint continuous flow water heaters

## Standard Horizontal Flue Kit:

- 90 degree adapter F/F 60/100
- 60 / 100 Horizontal Terminal
- Black outer wall plate
- White inner wall plate

Used for installations where terminating horizontally directly back through the wall that the unit is mounted on.

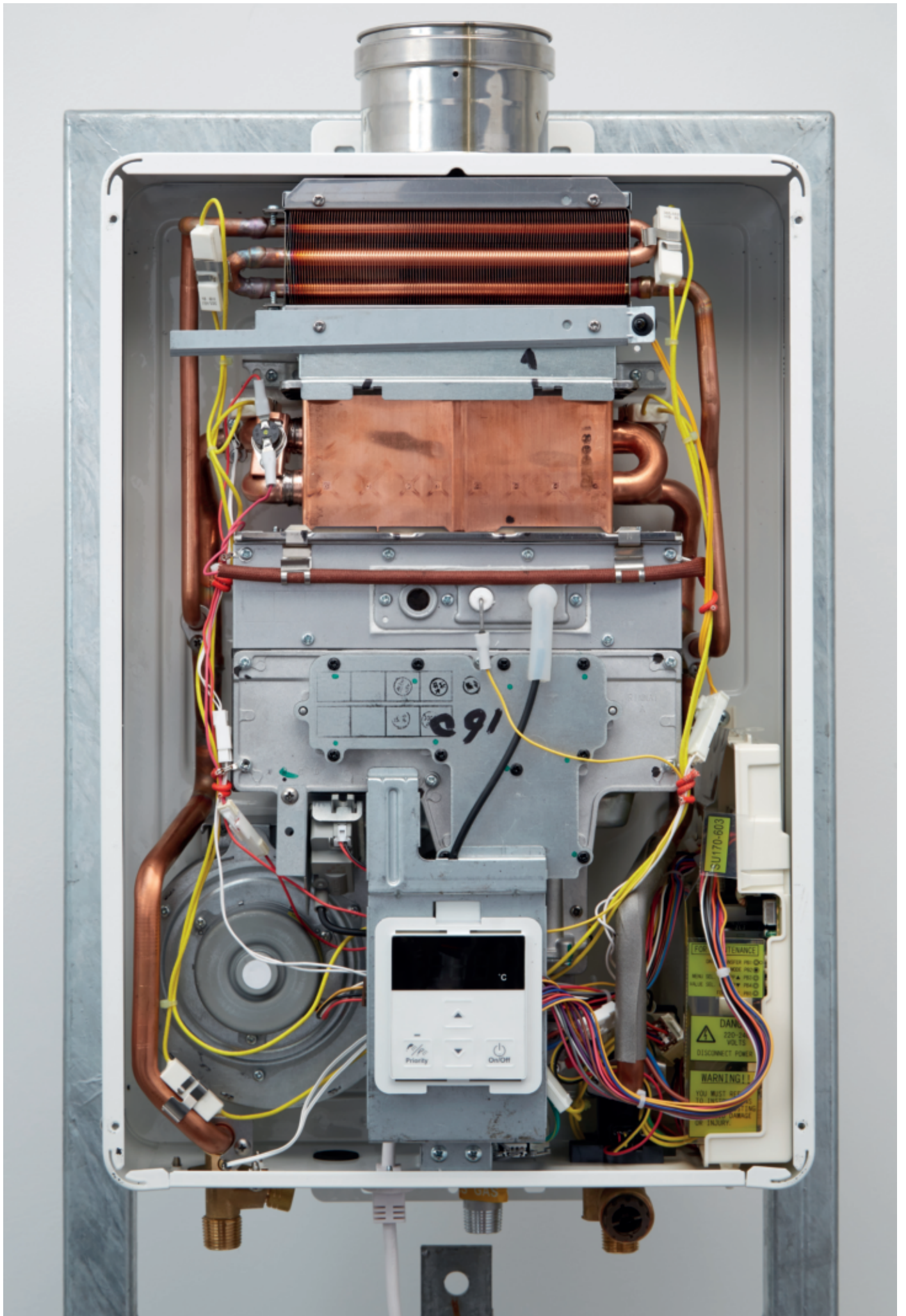
## Standard Vertical Flue Kit:

- Straight adapter 60/100 x 80/ 125 with trap
- 80/125 roof terminal
- Attic clamp
- White inner wall plate

Used for installations where terminating vertically.

**The total equivalent flue length is limited to 6.5m each 90 degree bend should be considered 0.5m of the total equivalent length.**





## Experience even greater innovation from Rinnai with our new external wall mounted 17e continuous flow water heaters.

The **17e** is fitted externally, increasing installation flexibility and saving internal space.

The external appliances come with the appropriate weather proofing which provides the required protection to ensure consistent, long life working efficiency.



A range of external ancillary items including a pipe cover box and security cage are available where necessary. The appliance is capable of flow rates in excess of 500 litres per hour at a 45°C rise, the 17e is suitable for multiple applications, such as cafés, small restaurants and domestic properties.

## Rinnai continuous flow controls



- ON/OFF function
- Greater temperature control
- Multiple controllers can be used
- Lockable
- Fault diagnosis using maintenance monitor (flow rates, thermistor temperatures, etc)
- Fault code history
- Automatic bath fill feature available on some models

**Rinnai UK**, 9 Christleton Court, Runcorn, WA7 1ST  
Tel: 01928 531 870 / [www.rinnaiuk.com](http://www.rinnaiuk.com)

**Rinnai London**, 5th Floor, Hyde Park Hayes 3, 11 Millington Road, Hayes, UB3 4AZ  
Tel: 0203 903 9030 / [www.rinnaiuk.com](http://www.rinnaiuk.com)



Rinnai UK Ltd



@rinnai\_uk



Rinnai UK

**Rinnai**